

PIANO

I FEEL MY SAVIORS LOVE

COMPOSED BY K. NEWELL DAYLEY
ARRANGED BY RICKY VALADEZ,
JULIE VALADEZ, AND BRIGHAM WELCH

♩ = 60

Measures 1-7 of the piano arrangement. The music is in 4/4 time with a tempo of 60 beats per minute. It begins with a piano (*p*) dynamic. The right hand features a melody of eighth and quarter notes, while the left hand provides a harmonic accompaniment with chords and single notes.

8

Measures 8-13. The melody continues with sustained chords in the right hand and a steady bass line in the left hand.

14 MOLTO RIT.

Measures 14-17. The tempo is marked *MOLTO RIT.* (Very Slow). The music features a more spacious feel with longer note values and sustained chords.

18 A TEMPO RIT.

Measures 18-21. The tempo returns to *A TEMPO* (Ad libitum) and then *RIT.* (Ritardando). The right hand has a more active melody with eighth notes, while the left hand continues with a steady accompaniment.

22 A TEMPO

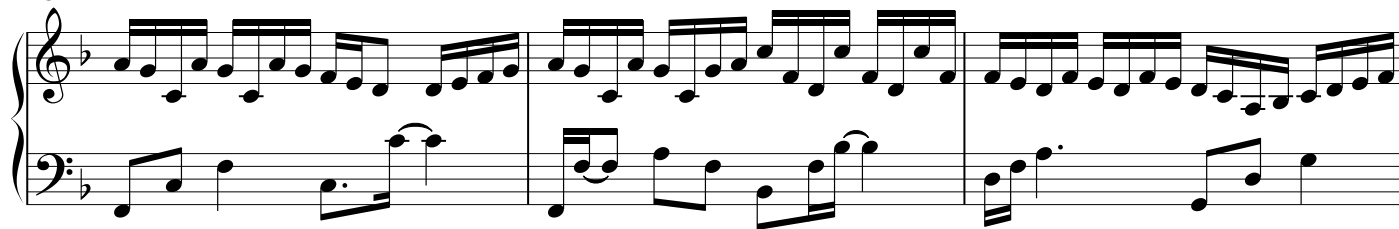
Measures 22-25. The tempo is marked *A TEMPO*. The piece concludes with a more rhythmic and active passage in both hands, featuring sixteenth and eighth notes. The dynamic is marked *mp* (mezzo-piano).

V.S.

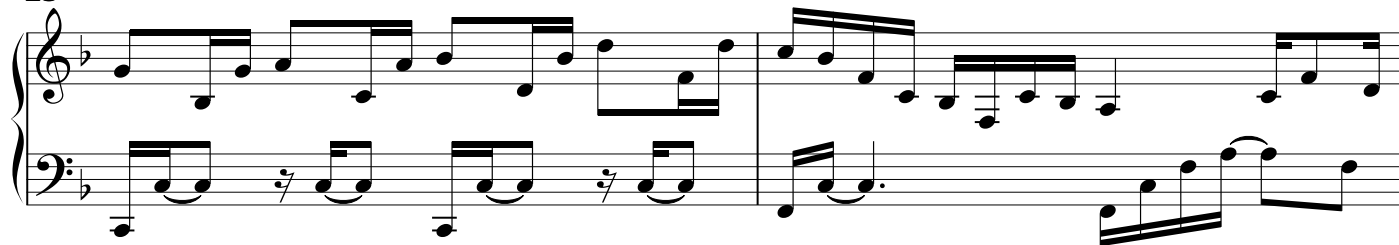
COPYRIGHT © 2013 BY RICKY VALADEZ
MAKING COPIES FOR NON-COMMERCIAL USE IS PERMITTED.
FREE AT RICKYVALADEZ.COM

I FEEL MY SAVIORS LOVE
PIANO

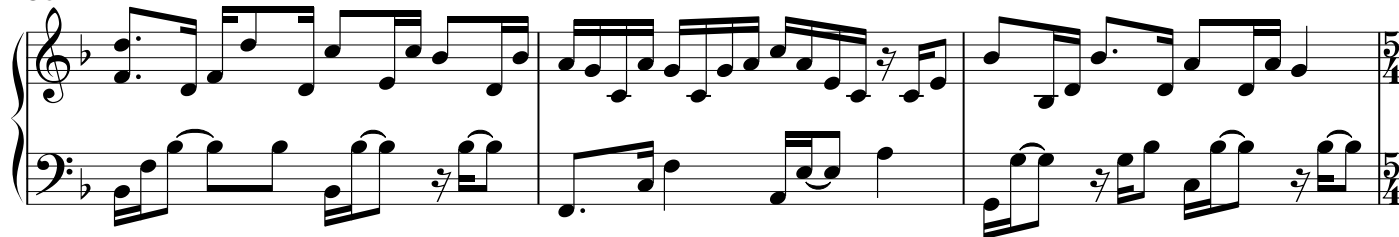
25



28



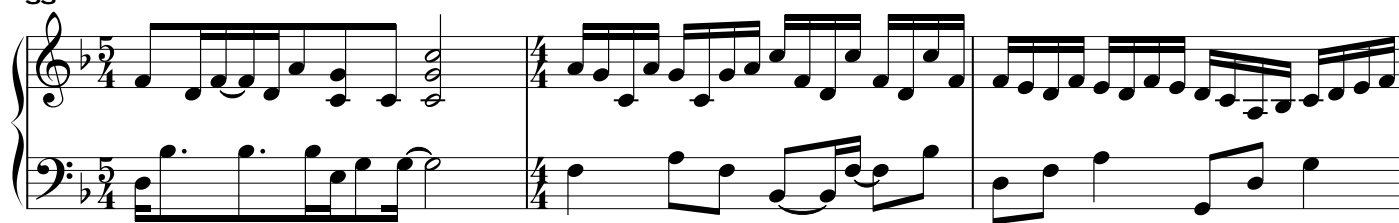
30



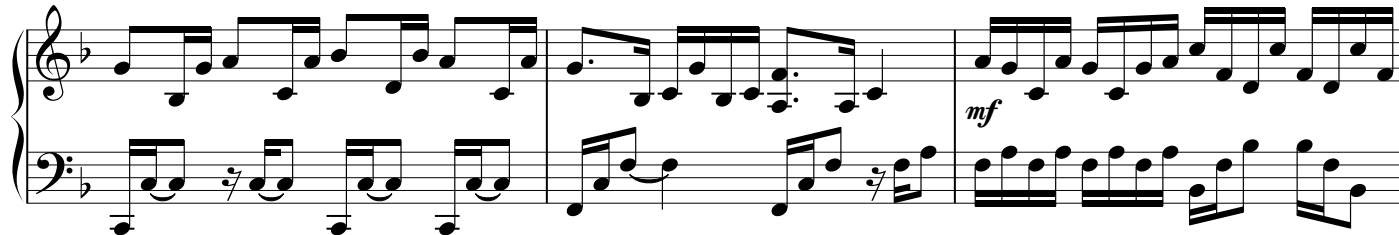
33

RIT.

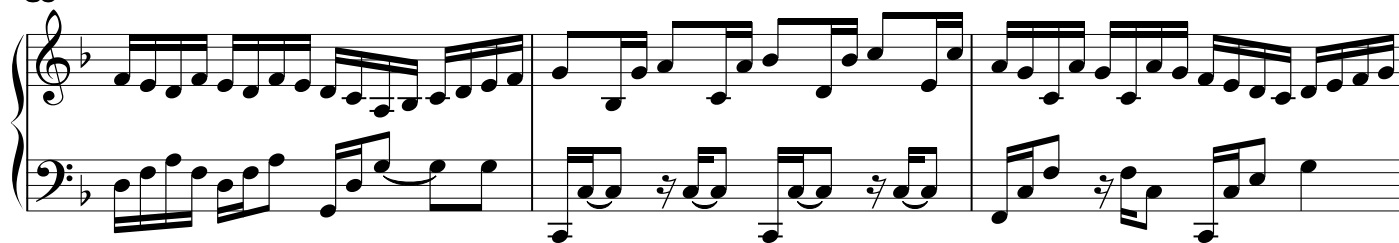
A TEMPO



36



39



I FEEL MY SAVIORS LOVE
PIANO

3

42

Measures 42-44: Treble staff features a continuous eighth-note melody. Bass staff provides a steady accompaniment with eighth notes and rests.

45

Measures 45-46: Treble staff continues the eighth-note melody. Bass staff features a more active accompaniment with eighth-note patterns.

47

Measures 47-48: Treble staff continues the eighth-note melody. Bass staff features a more active accompaniment with eighth-note patterns.

49 MOLTO RIT. A TEMPO

Measures 49-51: Measure 49 is marked 'MOLTO RIT.'. Measures 50-51 are marked 'A TEMPO'. Treble staff features a continuous eighth-note melody. Bass staff provides a steady accompaniment with eighth notes and rests.

52

Measures 52-54: Treble staff continues the eighth-note melody. Bass staff features a more active accompaniment with eighth-note patterns. A piano (p) dynamic marking is present in measure 54.

55 MOLTO RIT.

Measures 55-58: Measure 55 is marked 'MOLTO RIT.'. Treble staff features a continuous eighth-note melody. Bass staff provides a steady accompaniment with eighth notes and rests.