

PIANO

I FEEL MY SAVIORS LOVE

COMPOSED BY K. NEWELL DAYLEY
ARRANGED BY RICKY VALADEZ,
JULIE VALADEZ, AND BRIGHAM WELCH

♩ = 60

Measures 1-7 of the piano arrangement. The music is in 4/4 time with a key signature of one flat (Bb). Measure 1 starts with a piano (p) dynamic. The melody is in the right hand, and the bass line is in the left hand.

Measures 8-13 of the piano arrangement. The music continues with the same melody and bass line.

MOLTO RIT.

Measures 14-17 of the piano arrangement. The tempo is marked MOLTO RIT. (Molto Ritardando). The music continues with the same melody and bass line.

18 A TEMPO

RIT.

Measures 18-21 of the piano arrangement. The tempo is marked A TEMPO. Measure 21 ends with a ritardando (RIT.) marking. The music continues with the same melody and bass line.

22 A TEMPO

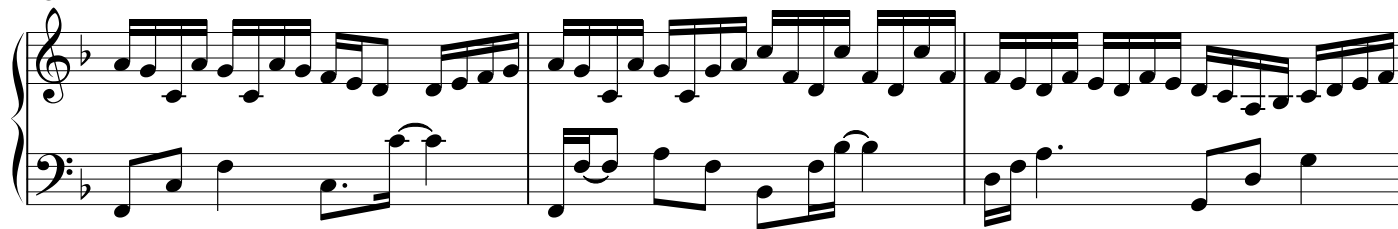
Measures 22-25 of the piano arrangement. The tempo is marked A TEMPO. Measure 22 starts with a mezzo-piano (mp) dynamic. The music continues with the same melody and bass line.

V.S.

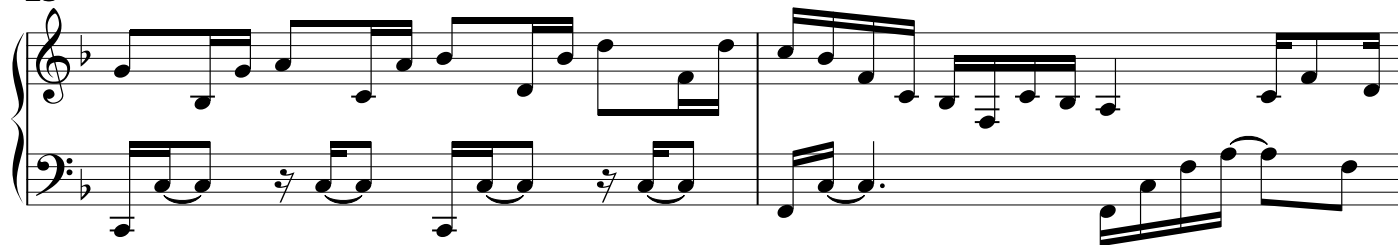
COPYRIGHT © 2013 BY RICKY VALADEZ
MAKING COPIES FOR NON-COMMERCIAL USE IS PERMITTED.
FREE AT RICKYVALADEZ.COM

I FEEL MY SAVIORS LOVE
PIANO

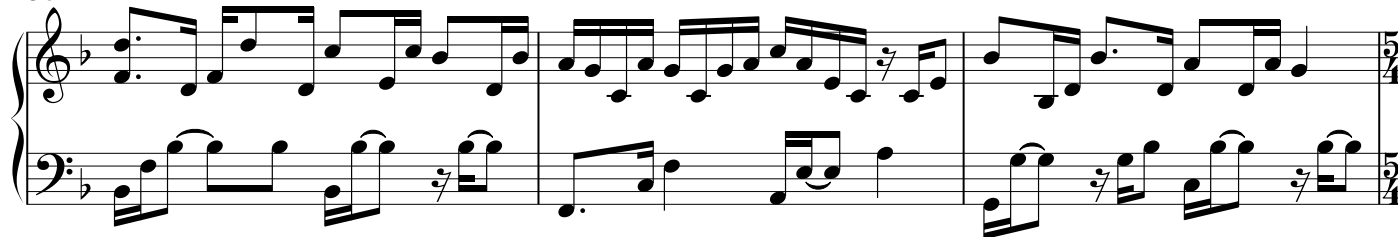
25



28



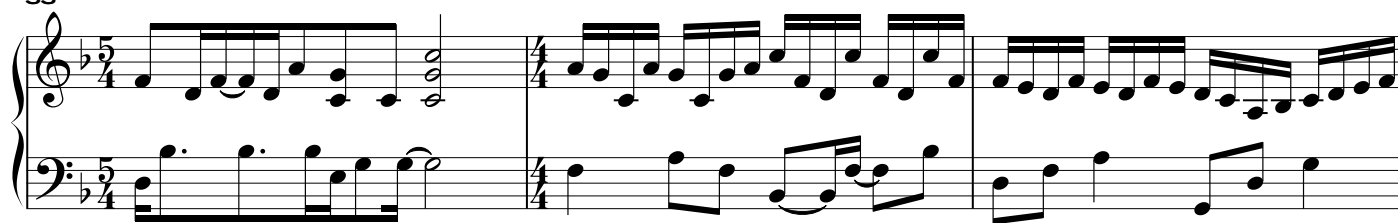
30



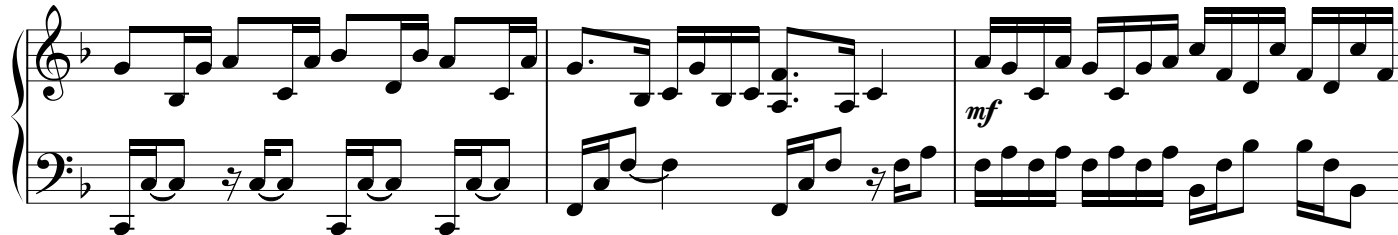
33

RIT.

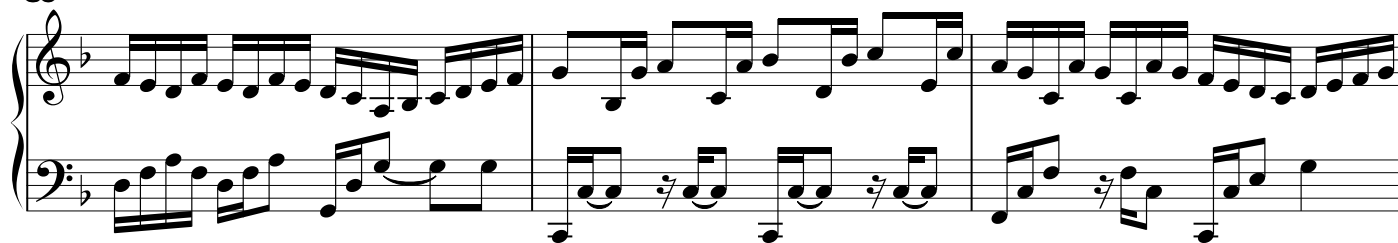
A TEMPO



36



39



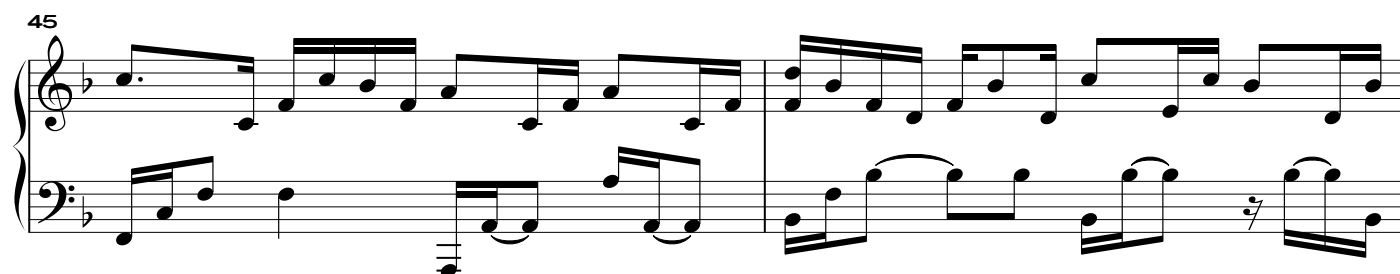
I FEEL MY SAVIORS LOVE
PIANO

3

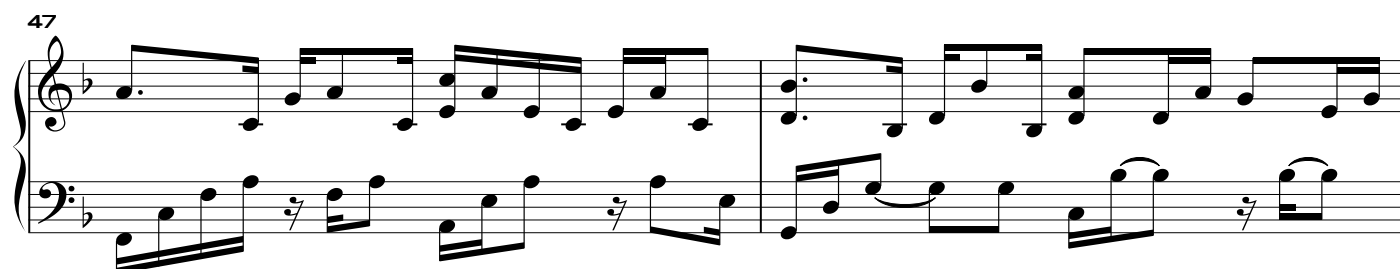
42



45



47



49 MOLTO RIT. A TEMPO



52



55 MOLTO RIT.

